

# RealBridge to Compscore Converter V2

Version 2 of the program creates two output files:

- 1) .CS2 files suitable for importing into Compscore2 or Compscore3. This part of the program is unchanged from Version 1;
- 2) a .csv file of the players in the session suitable for importing into MyABF for those clubs using MyABF for session payments.

## ***Initial preparation***

*(There are separate Converter files available for Teams, Swiss Pairs and some specialised duplicate pairs formats. See instructions at the end of this document.)*

For duplicate pairs sessions, there are two files required to operate the Converter:

- 1) RB\_CS\_Converter V2.xls
- 2) ABF\_RB.csv

They should be placed in their own folder (recommended: create the folder C:\RealBridge)

Open RB\_CS\_Converter V2.xls

- Enter the relevant folders in the gold and blue cells

Location of file: ABF\_RB.csv C:\RealBridge

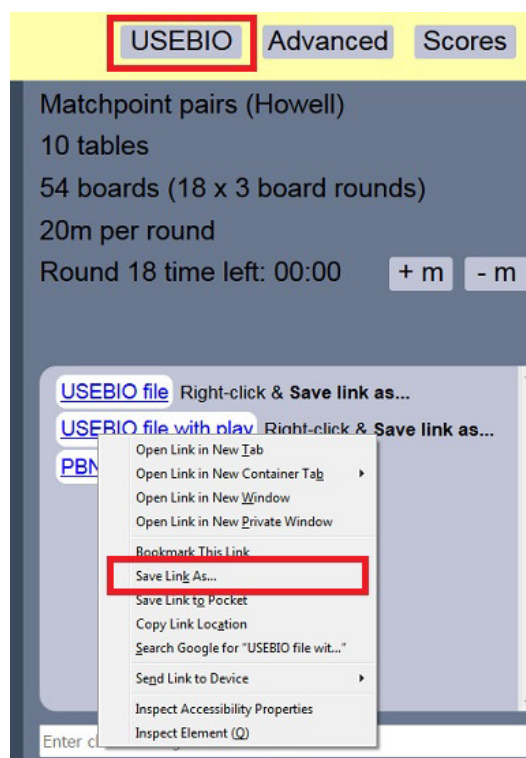
Folder where Compscore report is saved: C:\Compscore2\Exports

Save and close the file.

Unless you change these folders, you do not need to do this more than once.

## ***Running the program***

At the end of the session in RealBridge, click on the **USEBIO** button



Right click on "USEBIO file with play" and choose "Save Link as..."

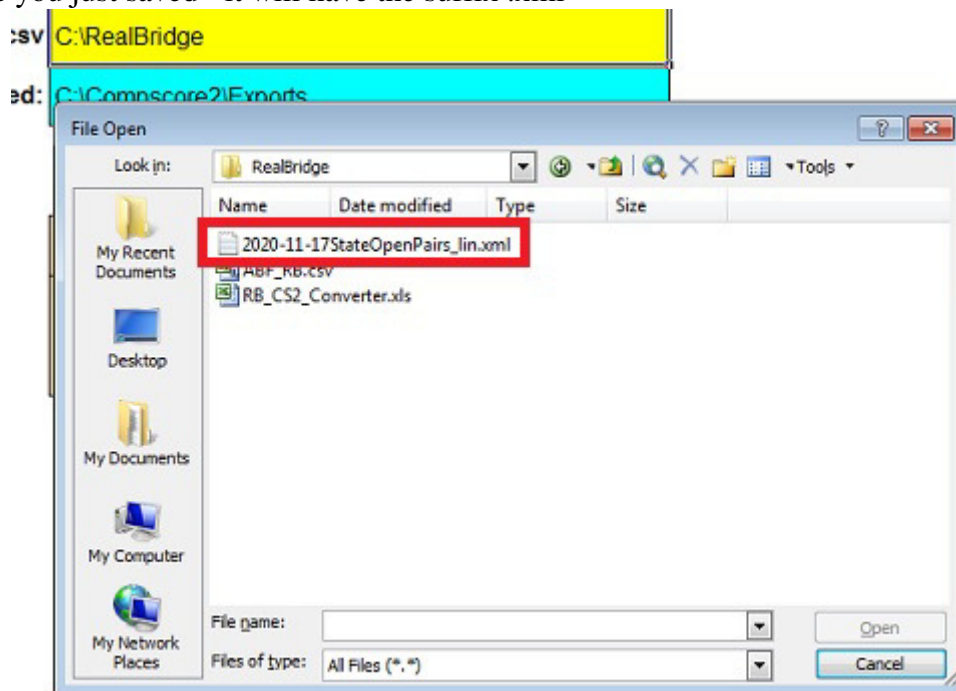
This file can be saved anywhere on your computer (saving it in the RealBridge folder is probably simplest). You need to remember where you saved it as you need to access it again.

You can give it any name you want, but simplest is to just leave the default name given by RealBridge. *(Although not needed for the Converter, it would be good practice to save the PBN file at the same time. This file includes the Hand record details.)*

Open RB\_CS\_Converter.xls

Click on **Convert Tournament File**

Locate the file you just saved - it will have the suffix .xml



Select the file and click Open

The file will now be converted into a .CS2 file and saved in the folder you have entered in the blue cell.

## ***Other points***

- The file ABF\_RB.csv is generated from the monthly ABF number update from the ABF Masterpoint Centre. I will email updates as they become available.

- You can add new players to the list so that they will be recognised by the program until they are added to ABF\_RB.csv. Use **Add new player**

- ABF\_RB.csv contains ALL players with ABF numbers, not just those who are active

- When a player logs on to RealBridge, they should enter their ABF # under ID number. If they fail to do so or they enter an incorrect number, they will be designated in the Compscore results with name and ABF # as 0.

- Compscore includes the ability to display the Bridge Movie of every board played. To make this work, the file you save from RealBridge USEBIO needs to be the one that is called "USEBIO file with play".

**- files for importing into MyABF will be generated in the same folder as the Compscore .CS2 file. The name of the file will start with "MyABF generic csv - Names -..."**

## Other Converters

### Teams, Swiss Pairs

On clicking [Convert Tournament File](#) you will be asked for the number of rounds and the number of boards per round. The remainder of the process is as described above for standard pairs sessions.

Note 1: It is possible to generate interim results (eg. after each round), so that running scores can be displayed in Compscore. Proceed exactly as described here. The Converter will produce round files for whatever data is available in the xml file at the time. (NB: the number of rounds to be entered is the number of rounds for the whole event.)

Note 2: If you run an event over a number of sessions, you may use more than one RealBridge link (especially if it runs over multiple days). Round numbering in RealBridge always commences from 1 in any session. Therefore, there needs to be a method of telling the Converter (and therefore Compscore) the actual round number. Enter the number of already completed rounds on the Main page of the Converter before clicking on [Convert Tournament File](#). Then when asked for the number of rounds, enter the number for just the current session.

# rounds completed in earlier session(s):	0
---	---

Note 3: Although it would be very rare, RealBridge does permit a Teams event to start with a board number other than 1. If that is the case, the first board number should be entered in the appropriate cell on the Main page before clicking on [Convert Tournament File](#).

### Split Tournament

This can be used for extended pairs events, using a single RealBridge link, where for the purposes of results display and/or masterpointing, you want the Compscore results to show the event as being over a number of sessions.

On clicking [Convert Tournament File](#) you will be asked:

- 1) the number of sessions you want the event split into - either 2 or 3
- 2) the low board number for the second (and third) session.

The remainder of the process is as described above for standard pairs sessions.

### Unchanged numbers

For a Mitchell movement, RealBridge assigns NS pairs an odd pair number and EW pairs an even pair number, so that all pairs have distinct numbers. The normal way of displaying Mitchell results is to have the pair numbers in both directions going from 1 upwards - as is typically displayed in Compscore. The standard Converter will change these numbers accordingly. If for some reason you wish to keep the distinct pair numbering, use “RB\_CS\_Converter V2 - unchanged numbers” instead.